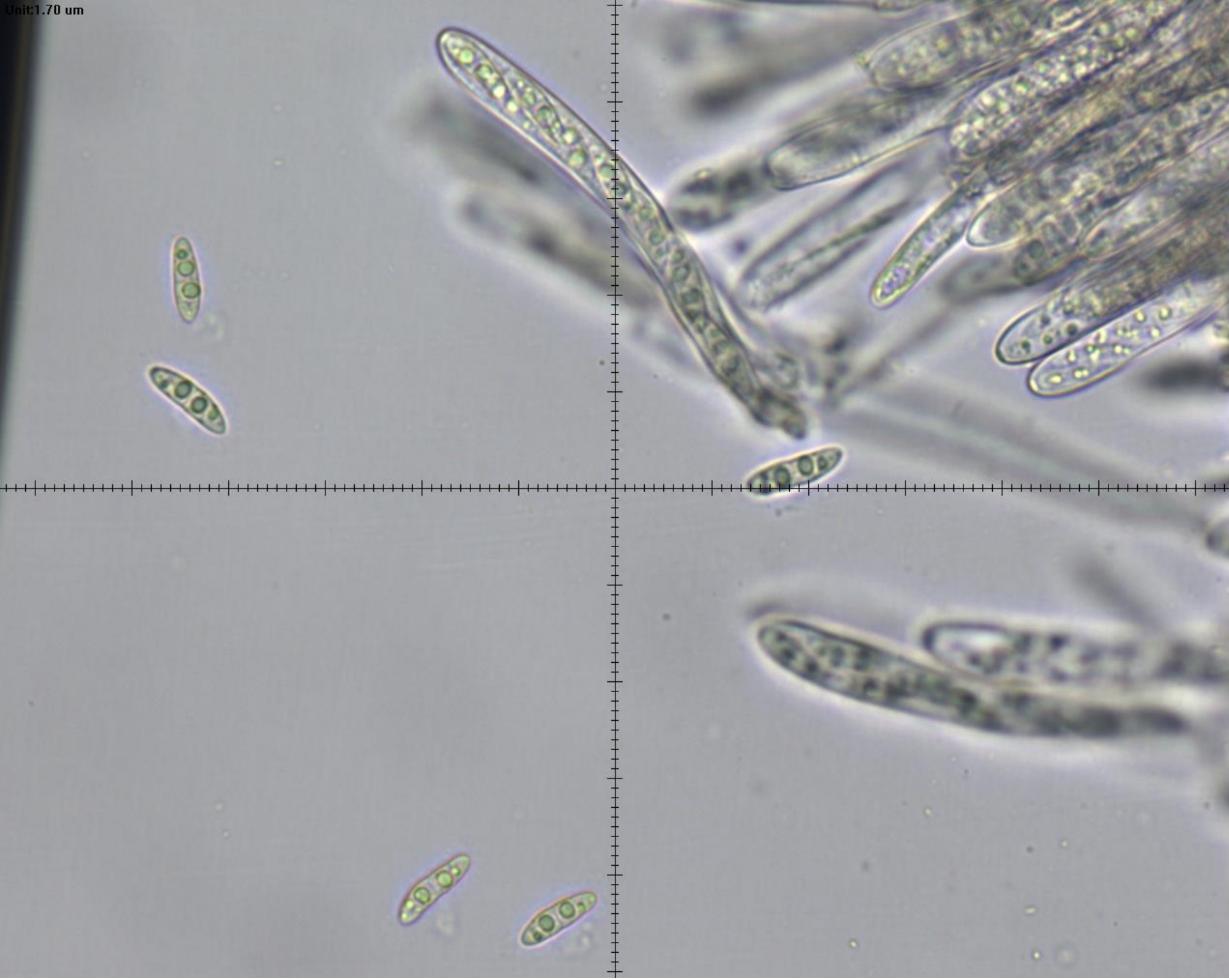


Measurements,
with averages

MollisiaBigBasin

	A	B	C	D	E	F	G	H	I
1	Asci				Spores				
2	Water		MLZ		Water		MLZ		
3	94	8	73	7.5	14.5	5	18	4.5	
4	90	9	81	8.5	16.5	4.5	14	4	
5	82	8	84	8	17.5	4.5	15.5	4	
6	80	7	90.5	7.5	15.5	4.5	17.5	4	
7	87	8	84	8	17.5	4.5	16.5	4	
8	72	8	82.5	7	15.5	4.5	15.5	3.5	
9	76	7	80	9	15.5	5	18	4	
10	78	9	78.5	7.5	18	4.5	18	4	
11	71	7.5	81.6875	7.875	17.5	3.5	18	3.5	
12	91	10			19.5	4	19	4.5	
13	82.1	8.15			16	4	17	4	
14					14.5	4.5	17.5	5	
15					14	4	17	4	
16					20	4.5	15	4	
17					15	4	16.89286	4.071429	
18					17	4.5			
19					15	4.5			
20					18.5	15			
21					19.5	4.5			
22					20	5			
23					23	5			
24					17.5	4			
25					17.15909	4.909091			
26									
27									

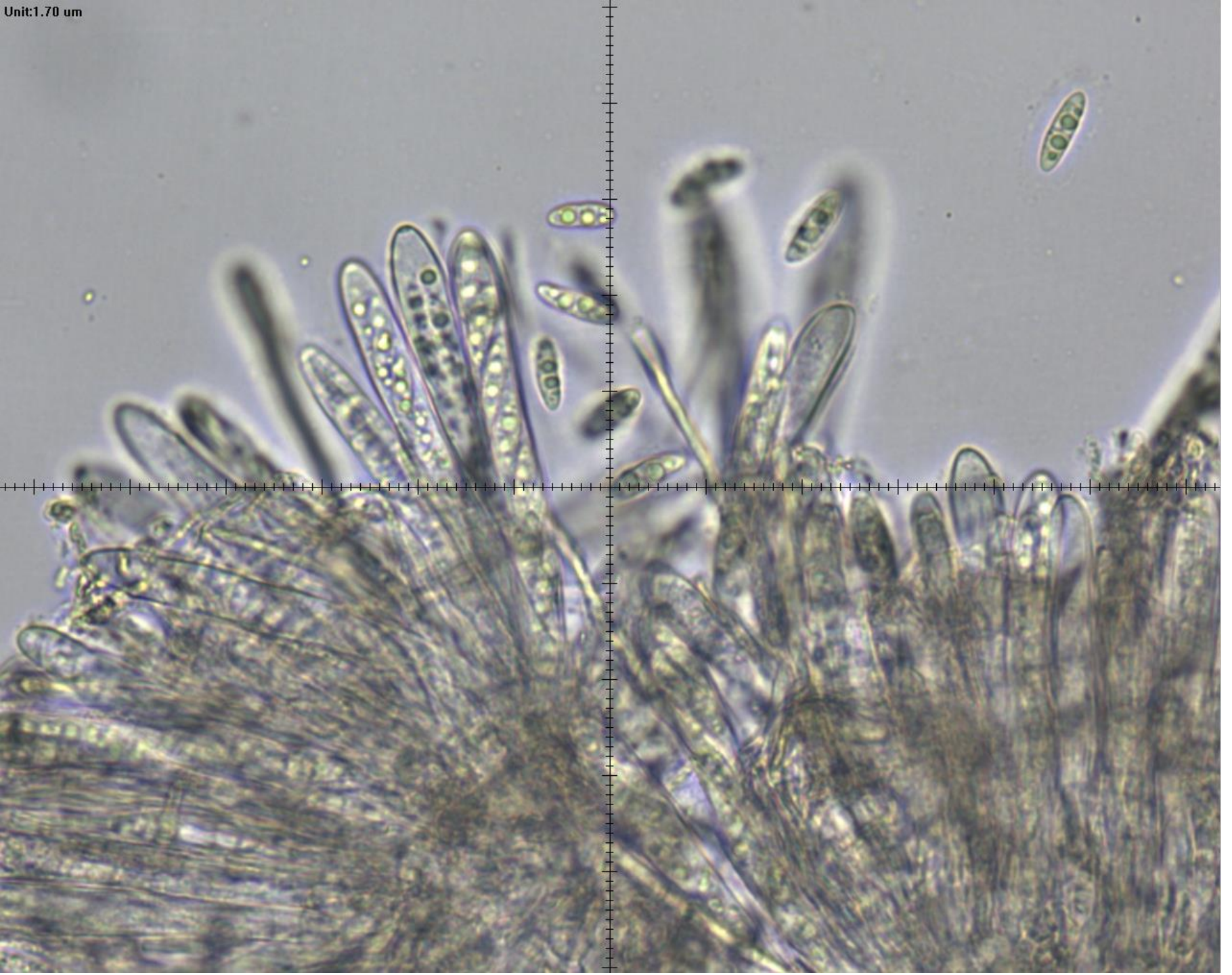
Navigation: Ascii_MLZ | Spores_MLZ | Ascii_H20 | Spores_H20 | All



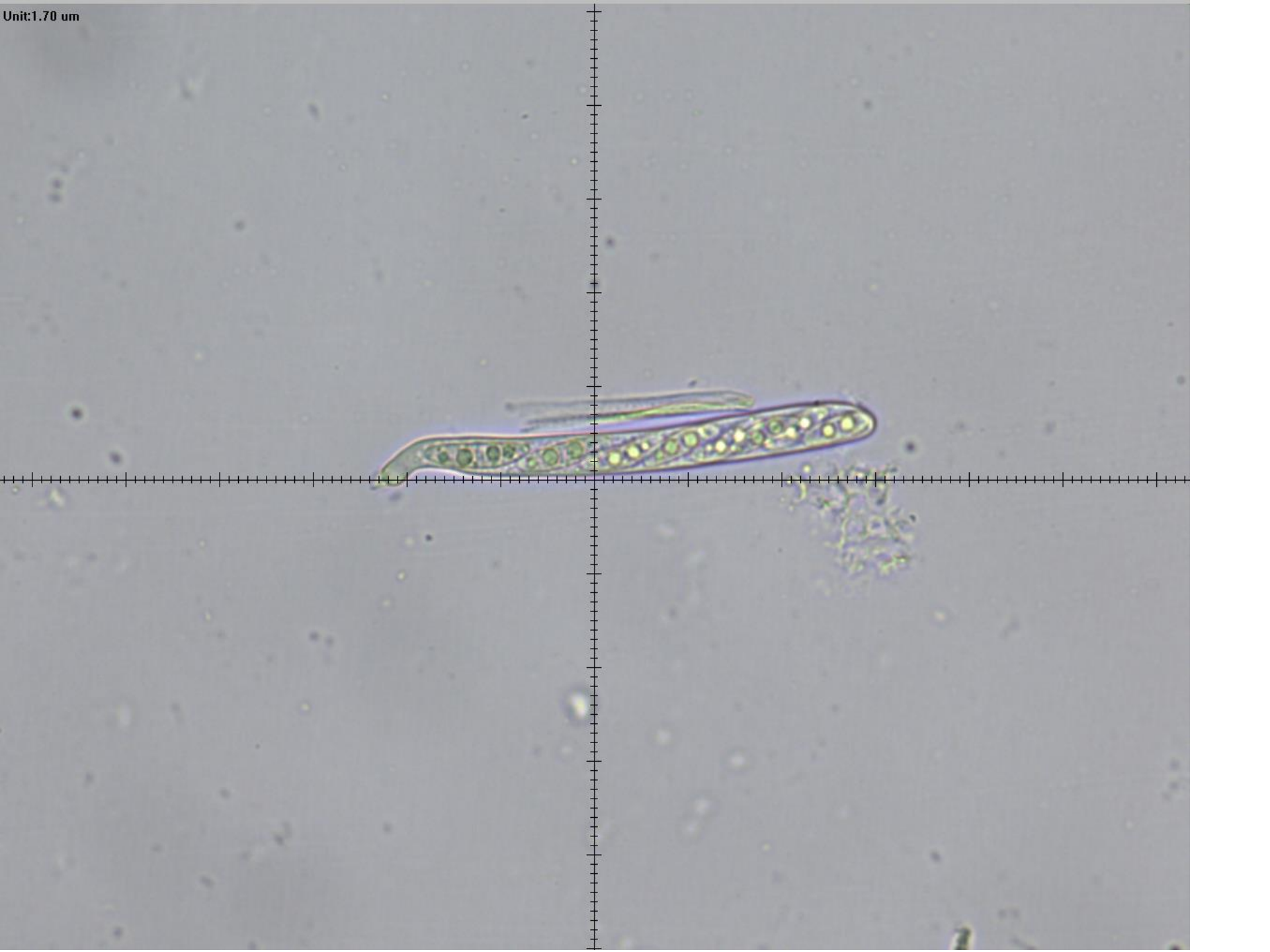
Unit: 1.70 um



Unit: 1.70 um

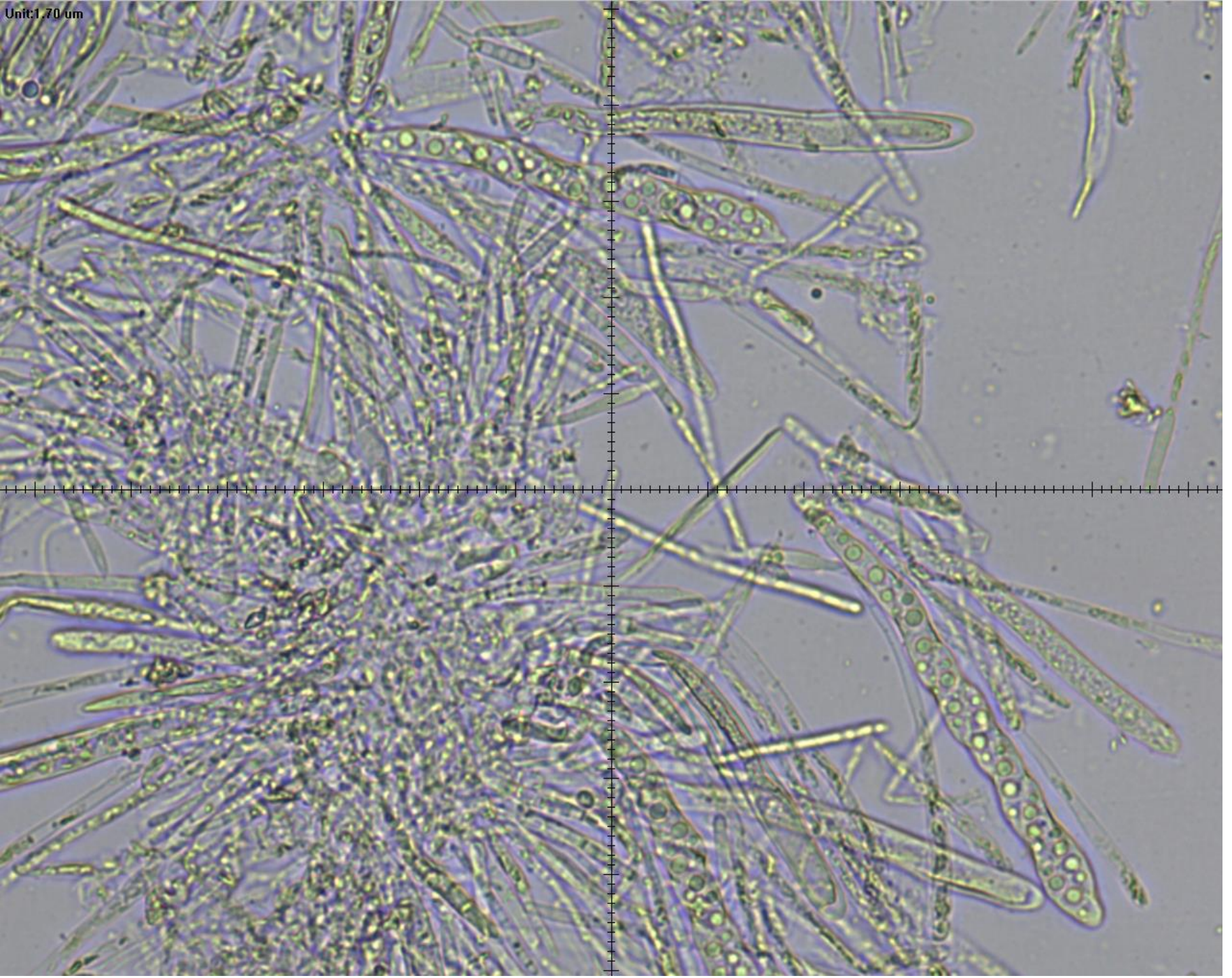


Unit:1.70 um

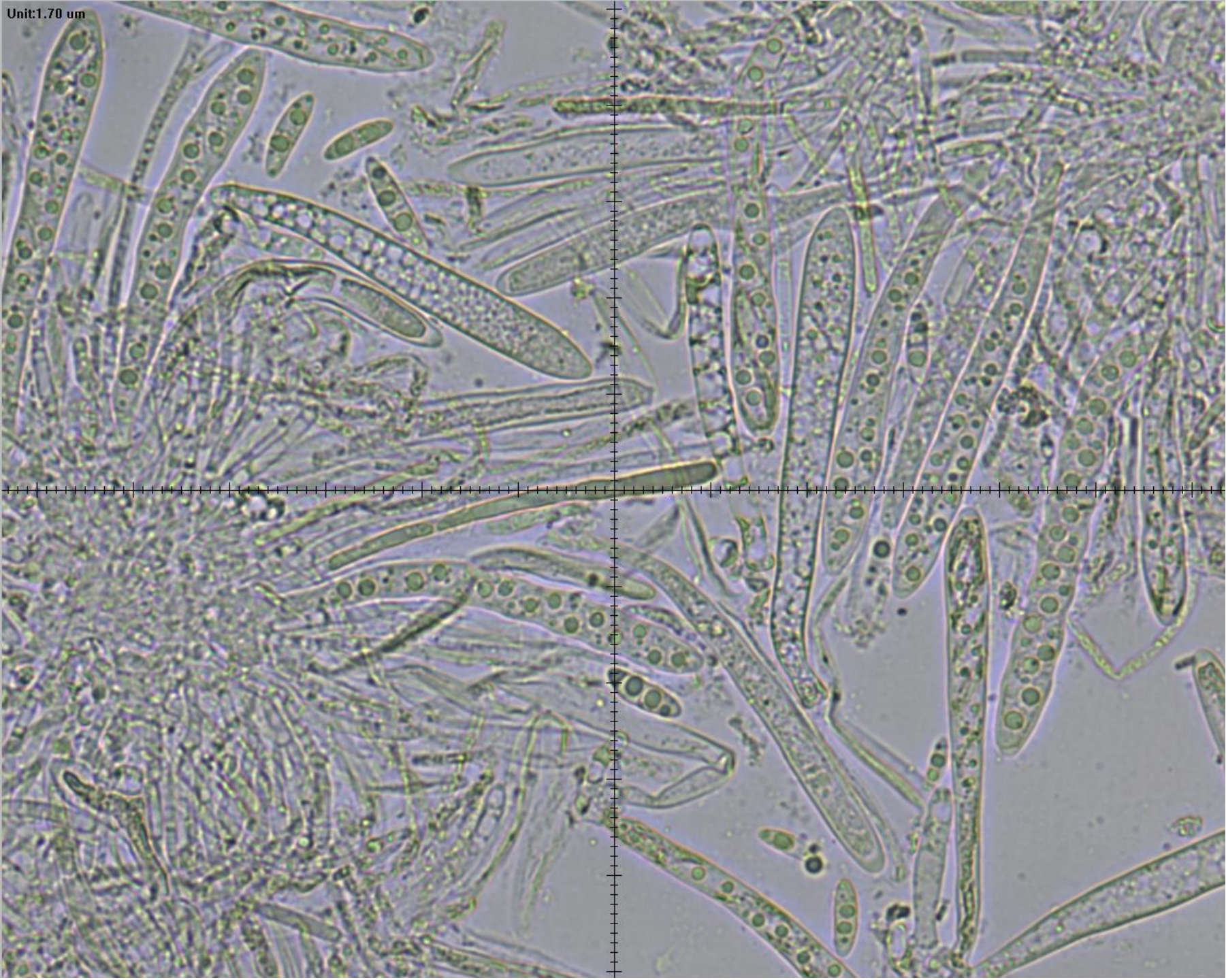




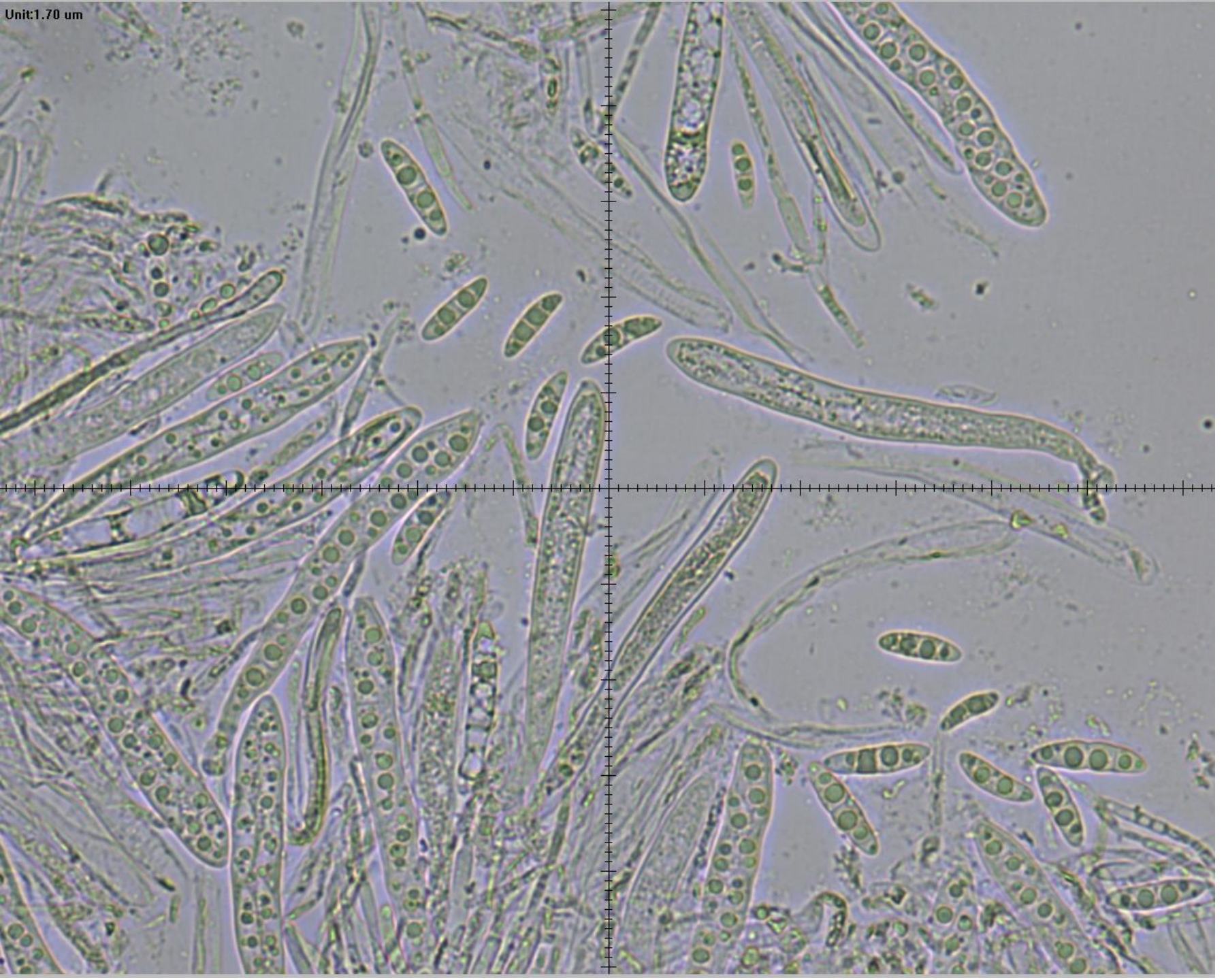
Unit: 1.70 μm



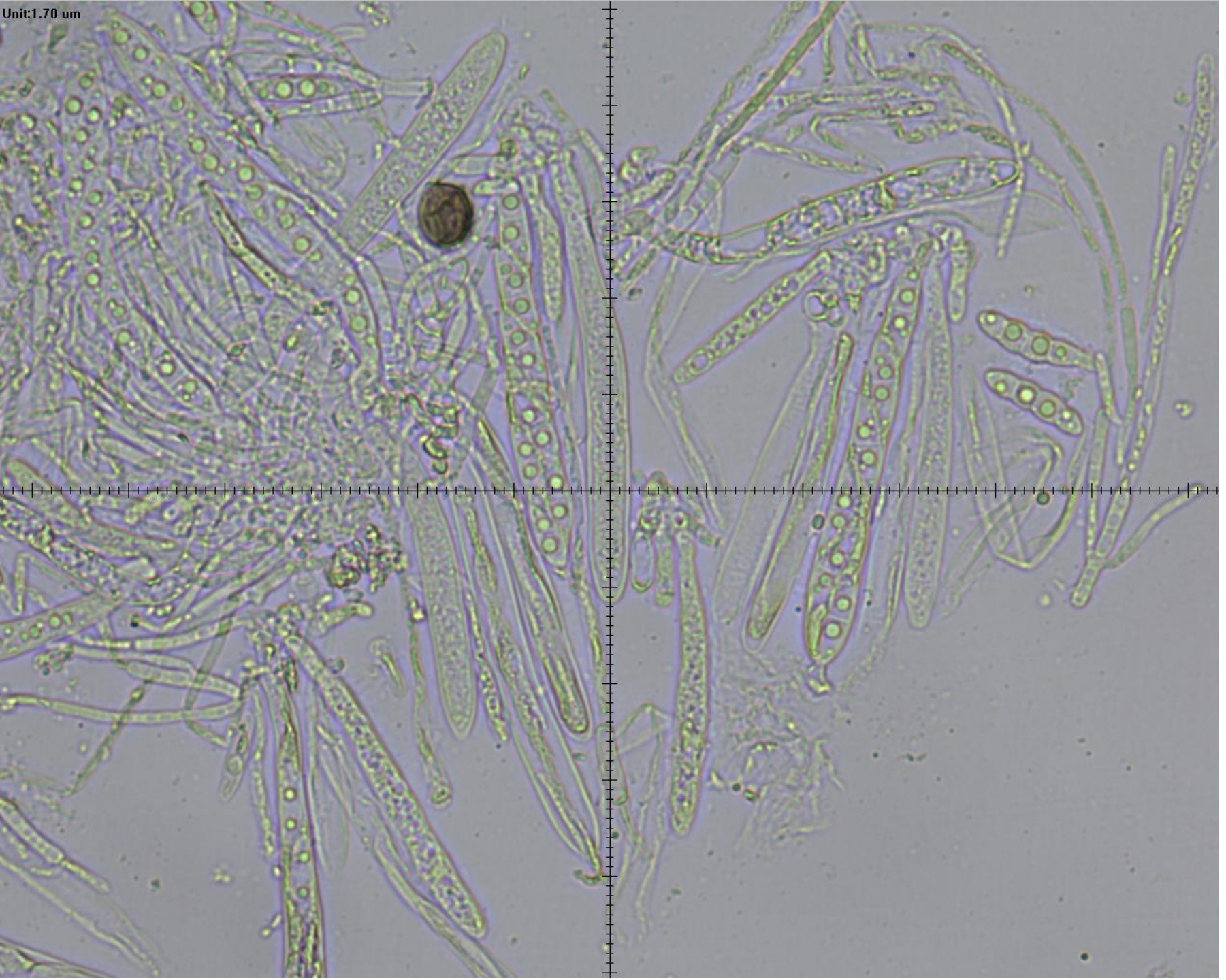
Unit: 1.70 um



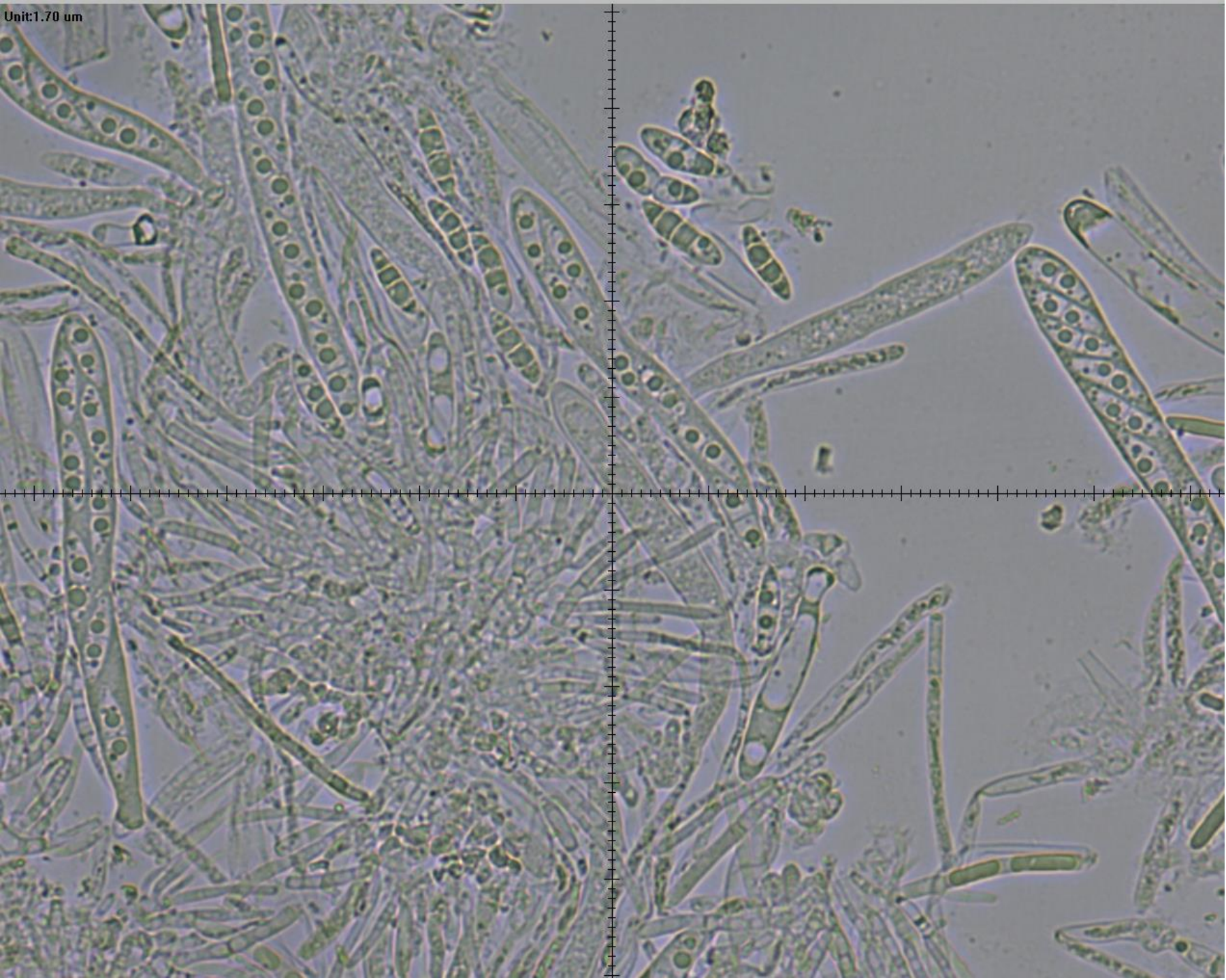
Unit: 1.70 um



Unit: 1.70 um



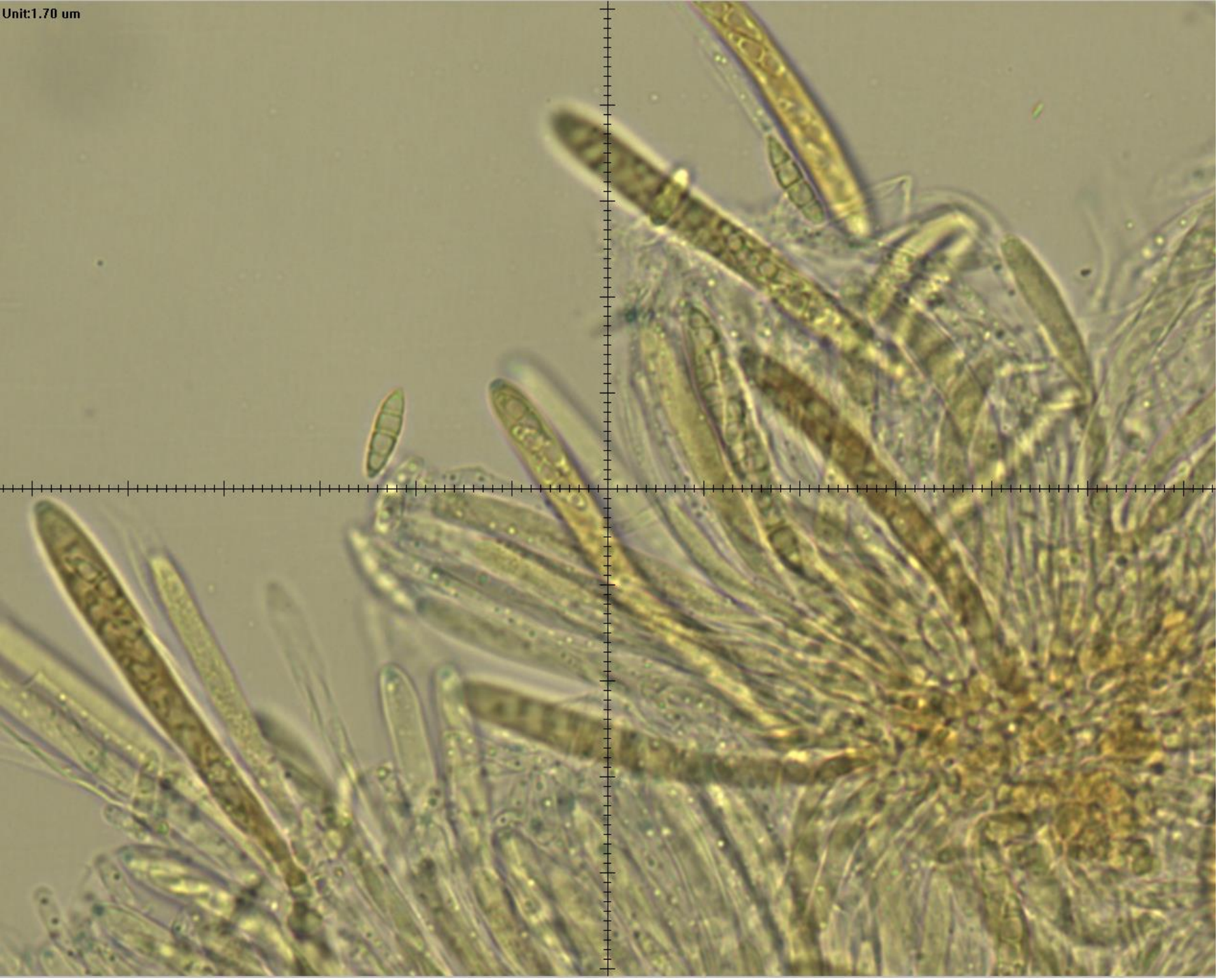
Unit: 1.70 μm



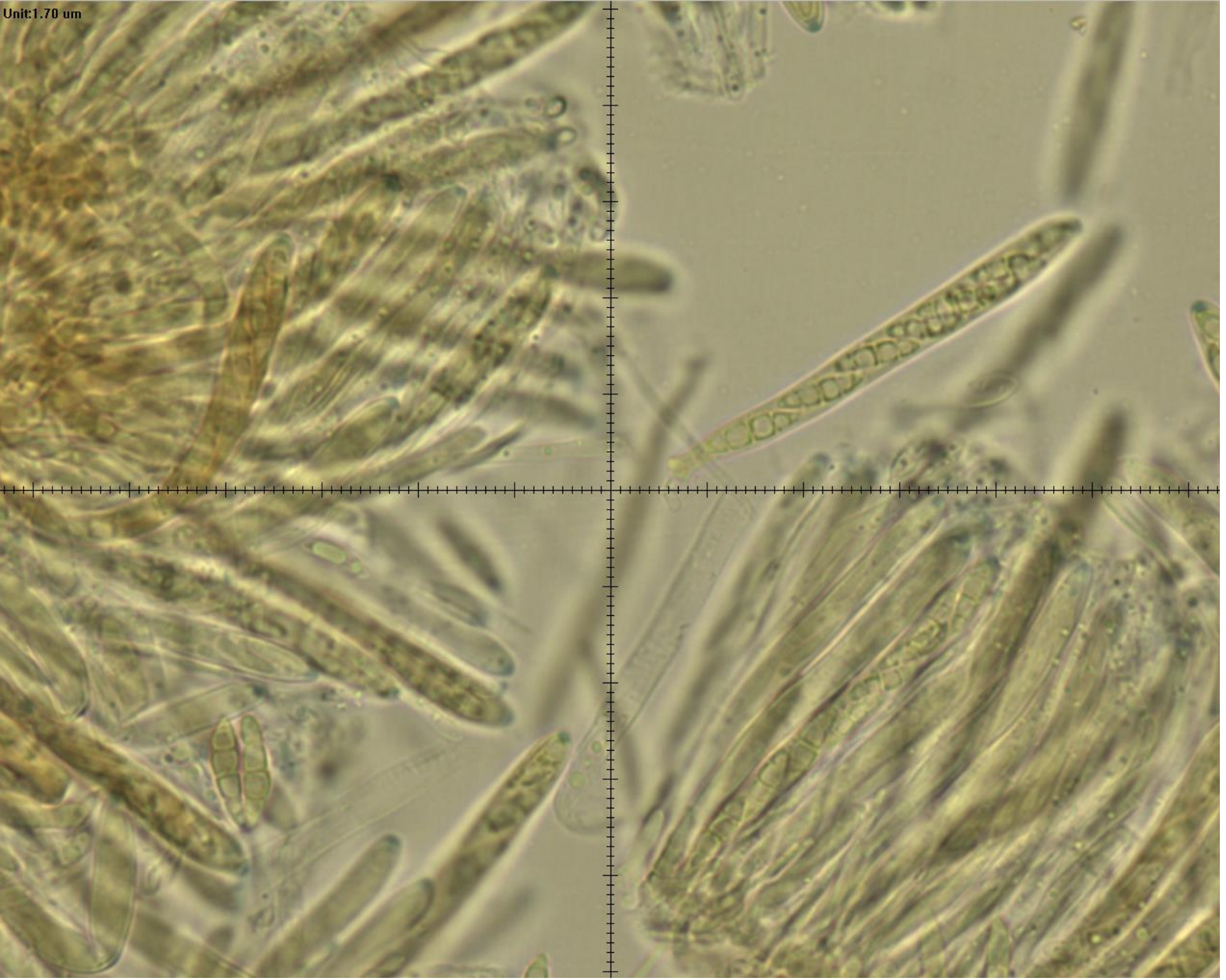
Unit: 1.70 um



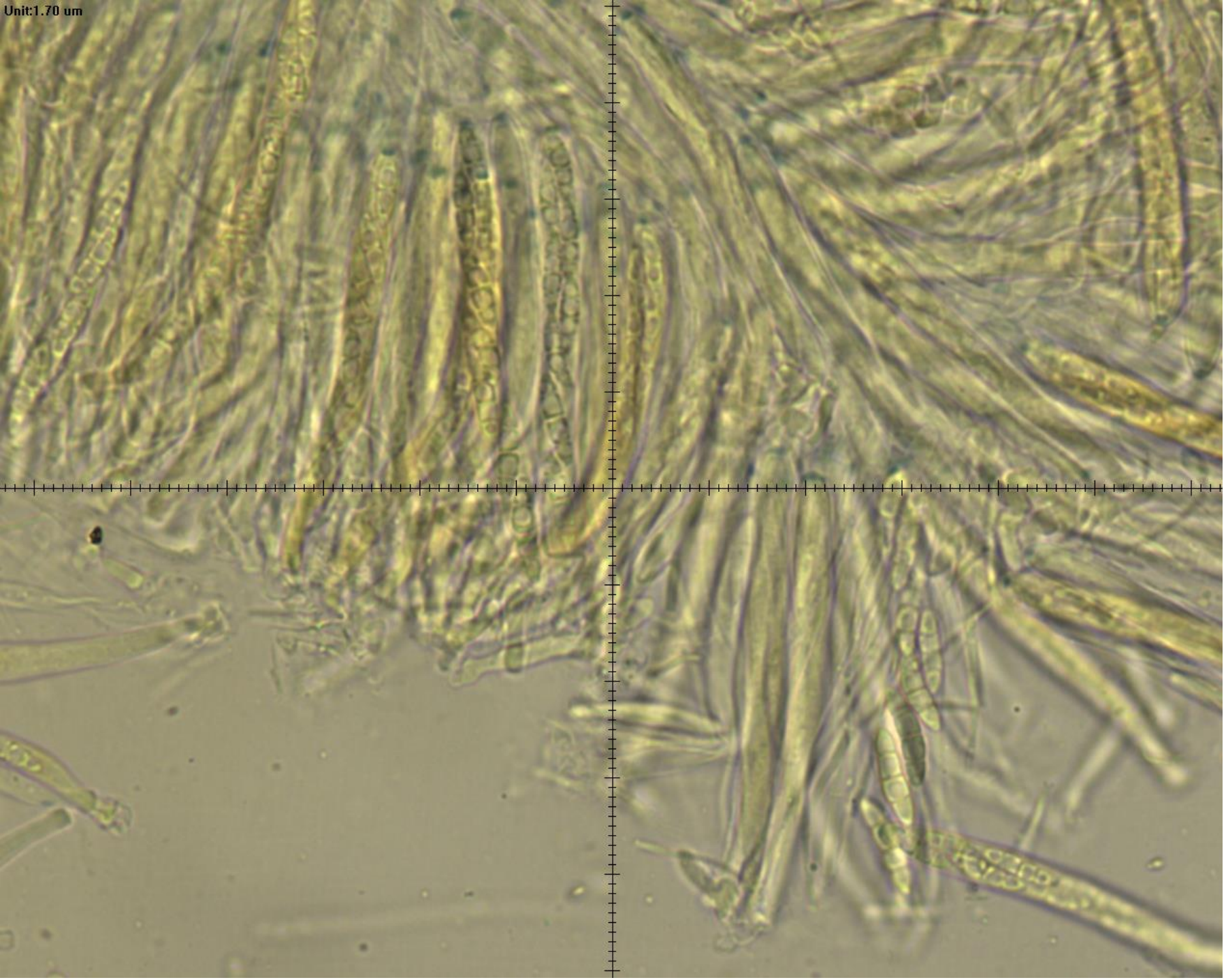
Unit:1.70 um



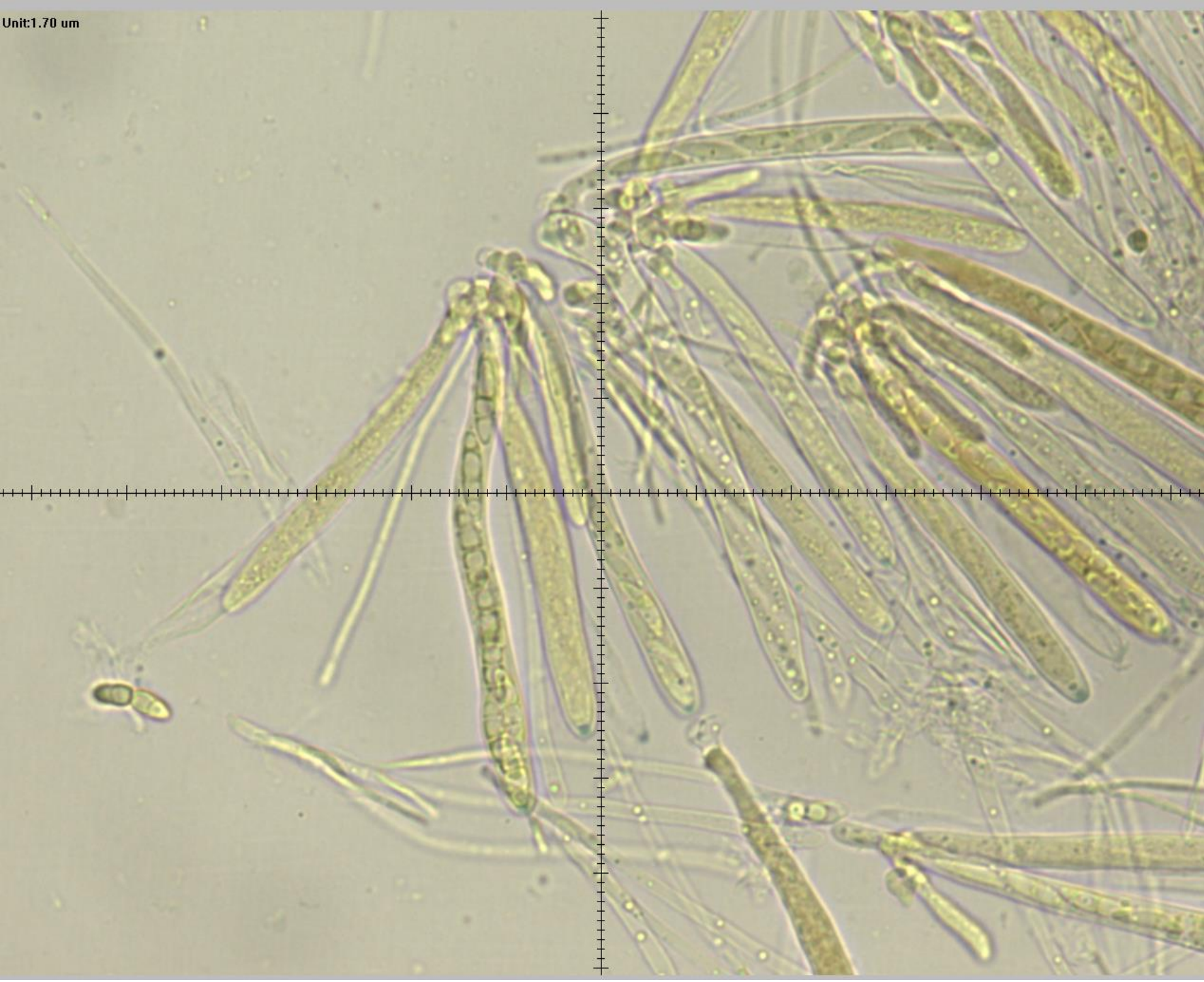
Unit: 1.70 um



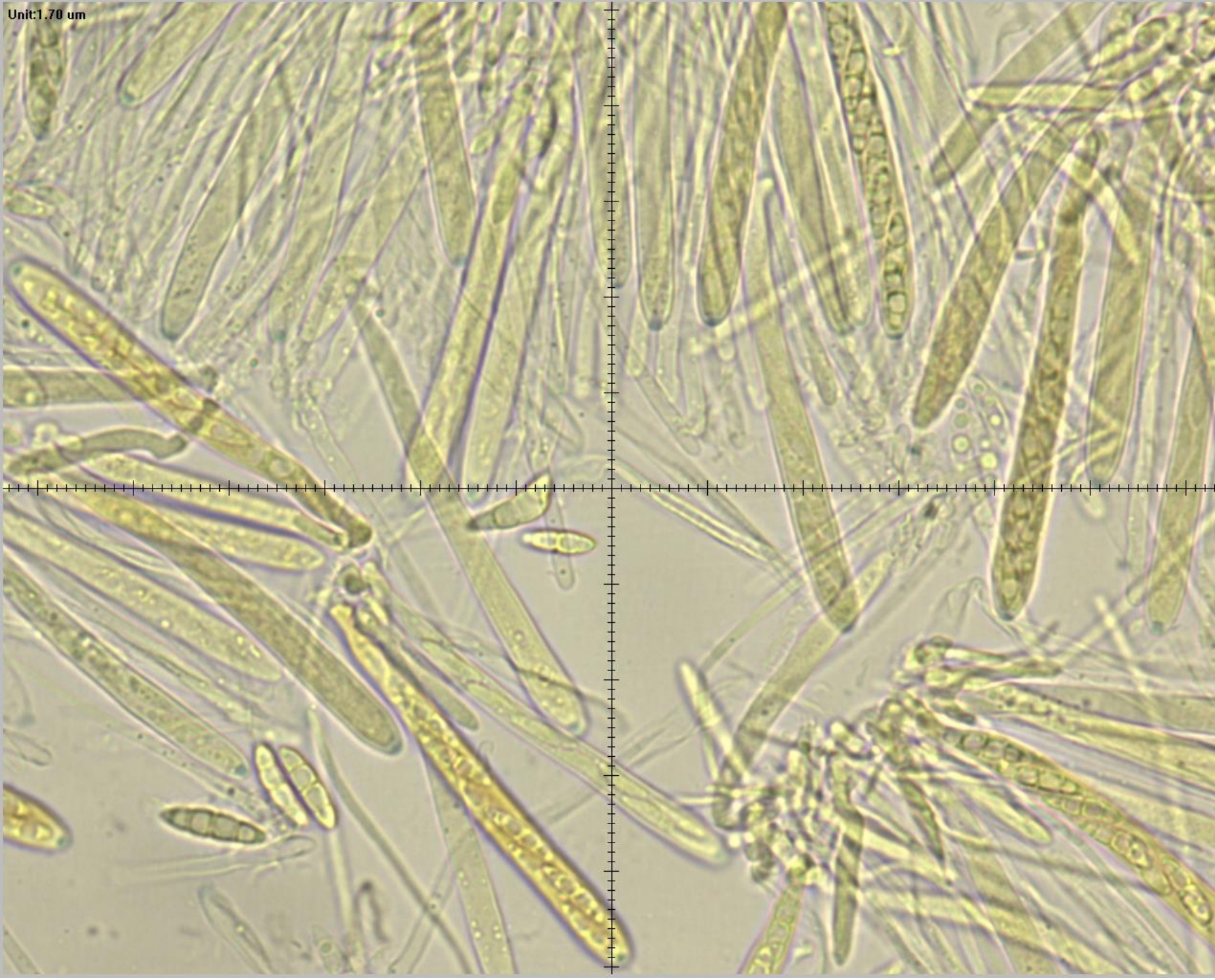
Unit: 1.70 um



Unit:1.70 um



Unit: 1.70 um



Unit: 1.70 um

