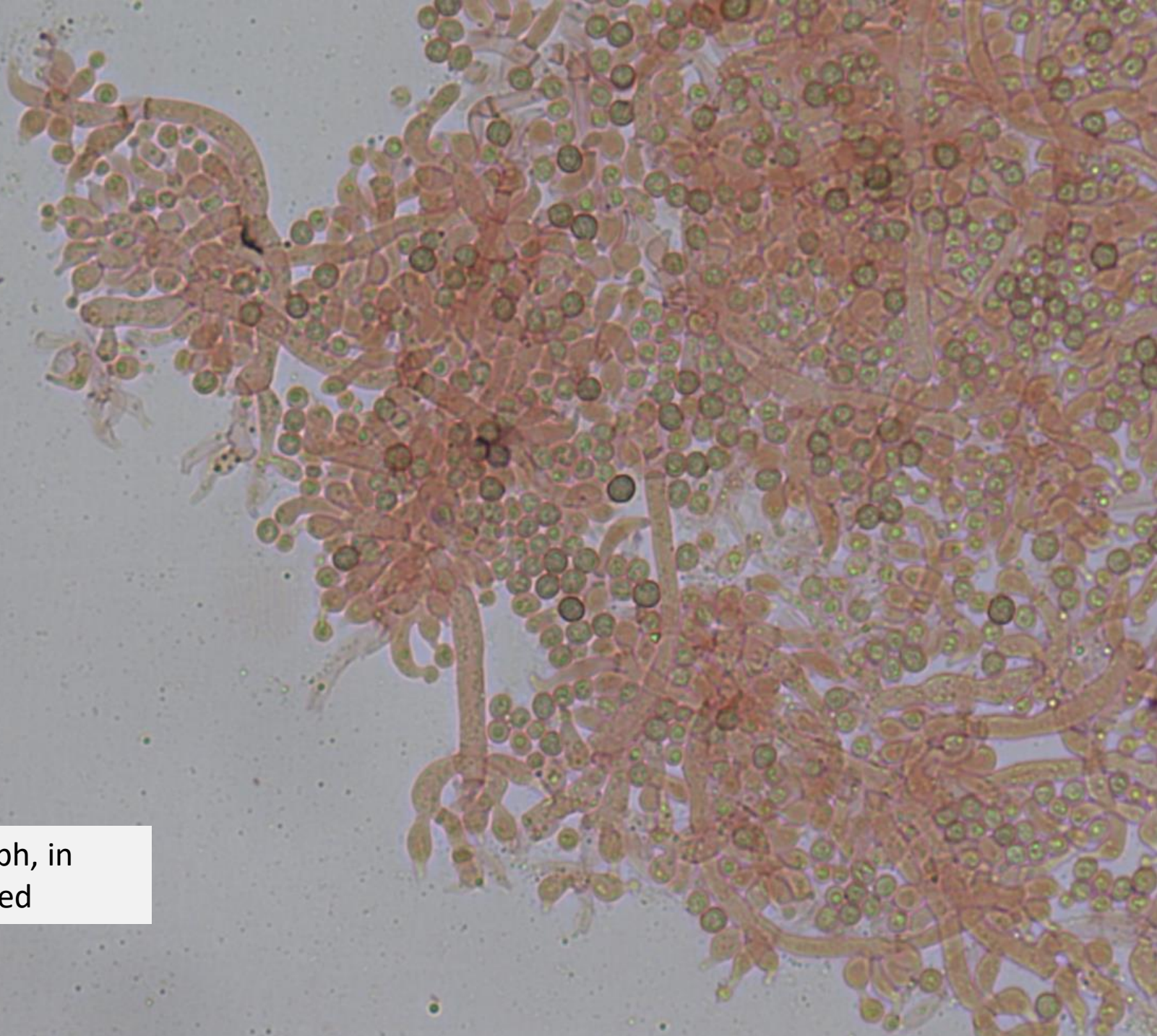
A light micrograph showing numerous small, spherical, dark-colored spores (anamorphs) dispersed in a liquid medium. The spores are scattered throughout the field of view, with some appearing in small clusters. The background is a pale, slightly textured greyish-blue, likely due to the water and the presence of some organic matter or debris. The spores themselves have a distinct dark outer layer and a lighter, possibly granular, interior. Some spores are in sharp focus, while others are blurred, indicating a shallow depth of field.

Anamorph
spores, in water



Anamorph, in
Congo Red



The shrub

