

## **Hamatocanthoscypha sps .. ?**

**Substrate:** Grass sps, probably Carex as four sided stemmed. On damp soil.

**Apothecia:** < 0.6mm Chrome yellow, concolourous with thick margin, cup shaped with short thick stem 0.2mm. Hairs not obvious on first observation.

**Asci:** 47 – 56 x 4.95 – 6.69  $\mu\text{m}$ , IKI +, Croz -, Pointed apical apex with seriate spores.

**Hairs:** Hooked ends mostly, reactive in KOH to bright yellow granular matter?, in water pale yellow overall. Same height as asci seemingly.

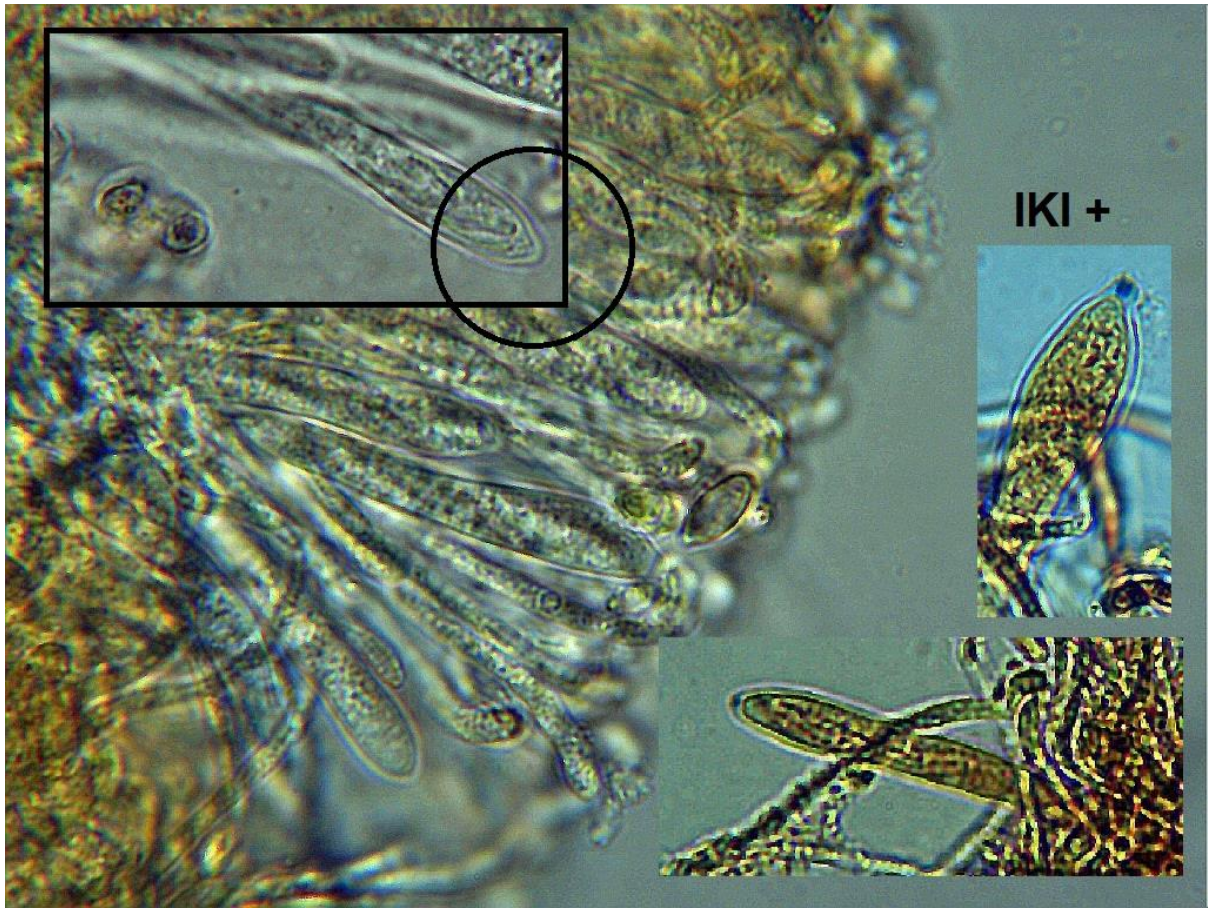
**Ascospores:** 6.05 – 9.54 x 1.76 – 2.05  $\mu\text{m}$ , sub-fusoid with one side flatter, oil spots at ends. Only few found outside of asci at this stage.

**Paraphyses:** Straight, cylindrical, very slight swollen tips. Same height as asci. 2-septate towards base.0

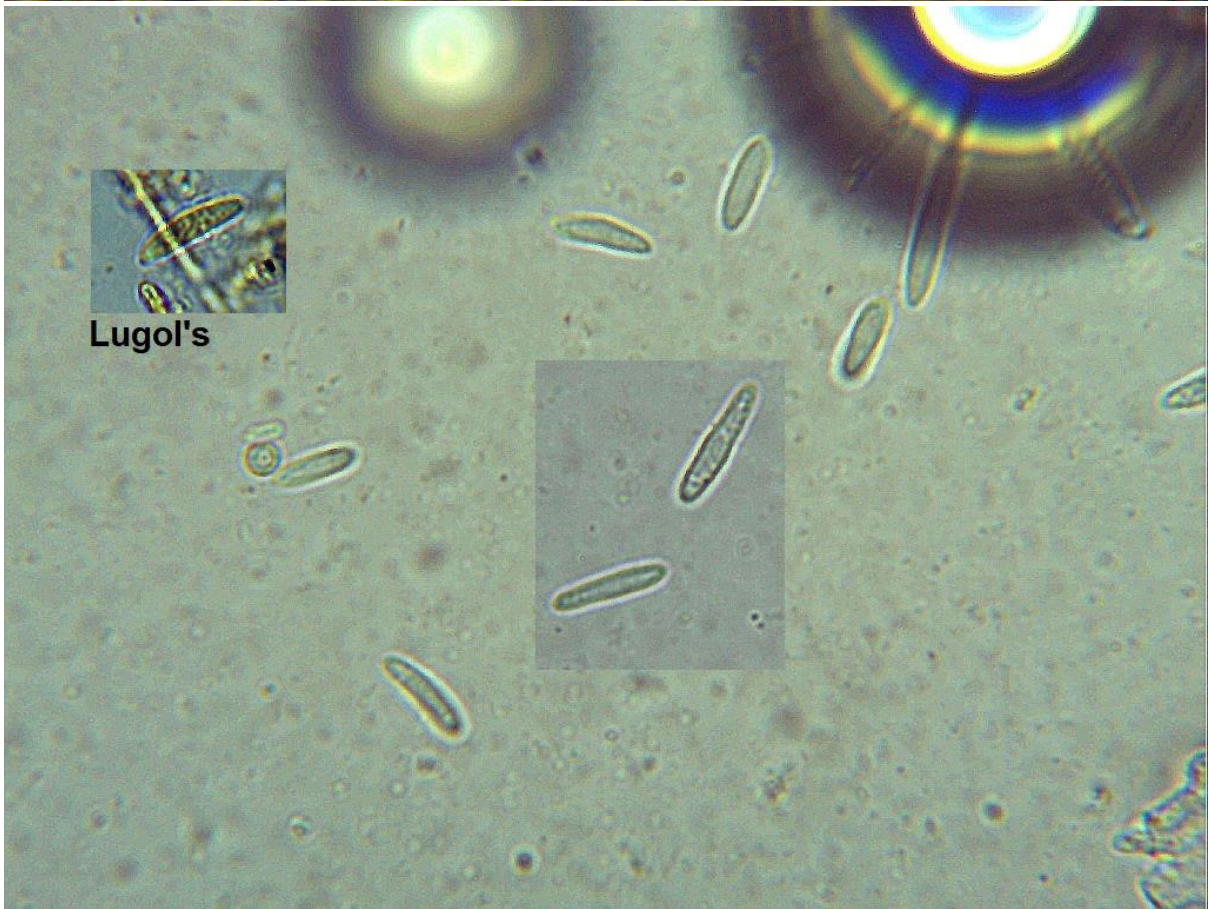
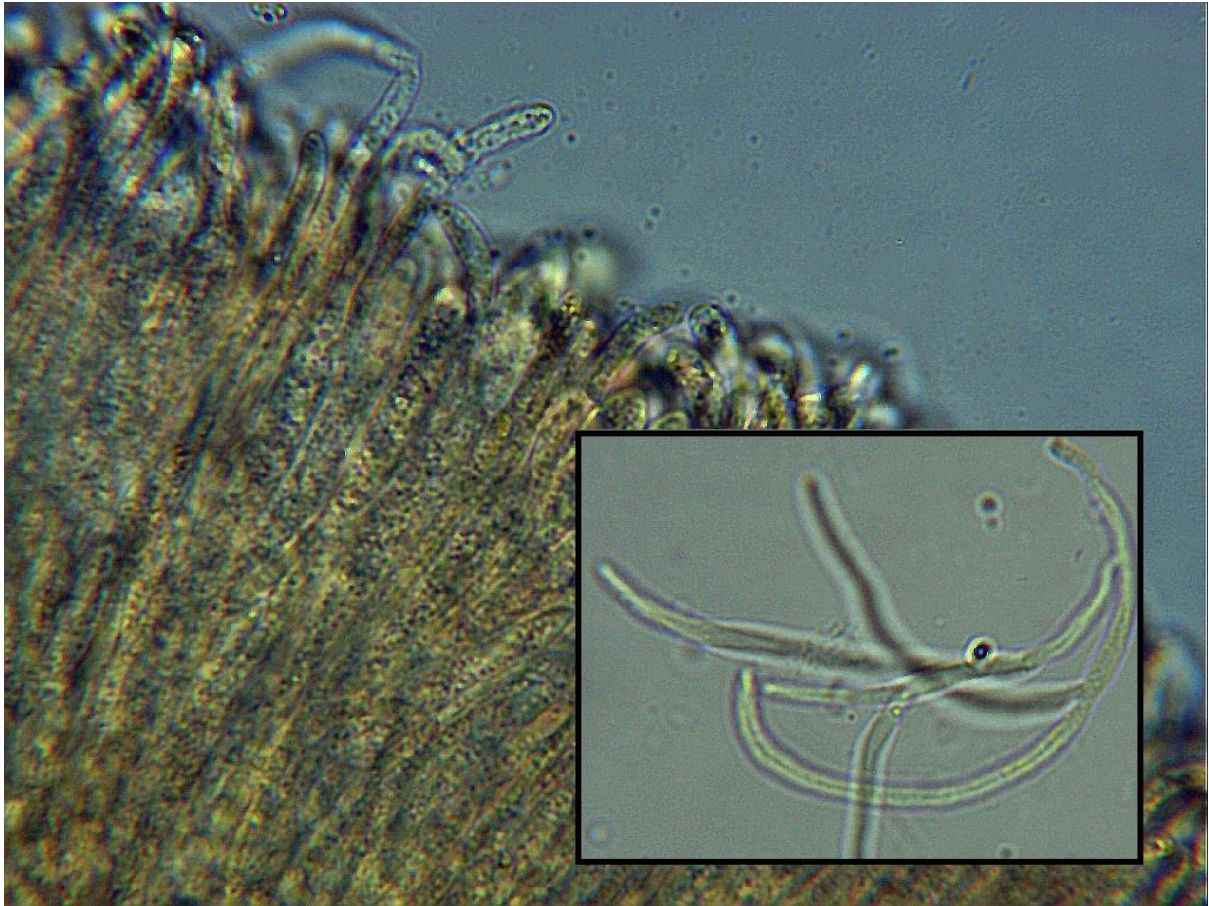
**Excipulum:** Not good images but appears spherical/angular.

[Grab your reader's attention with a great quote from the document or use this space to emphasize a key point. To place this text box anywhere on the page, just drag it.]

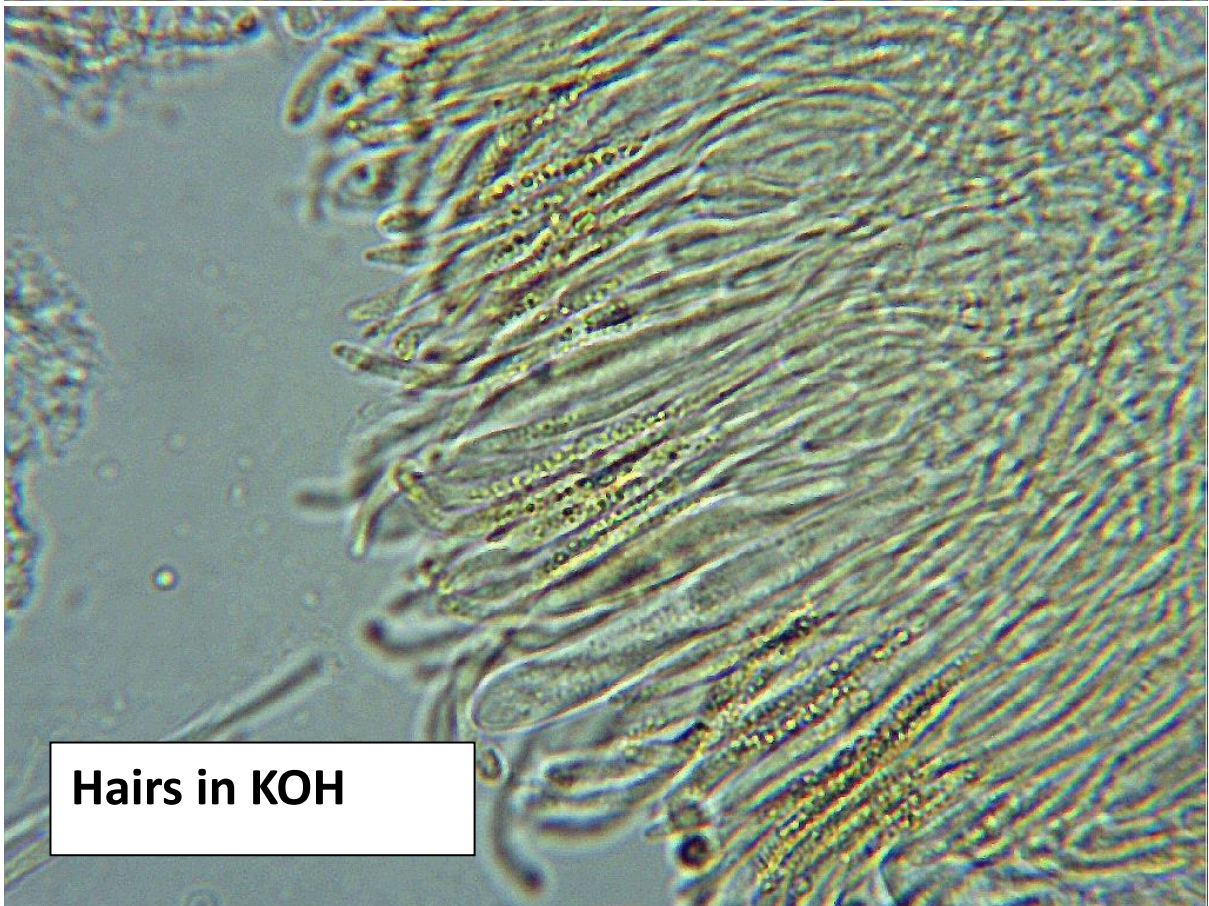
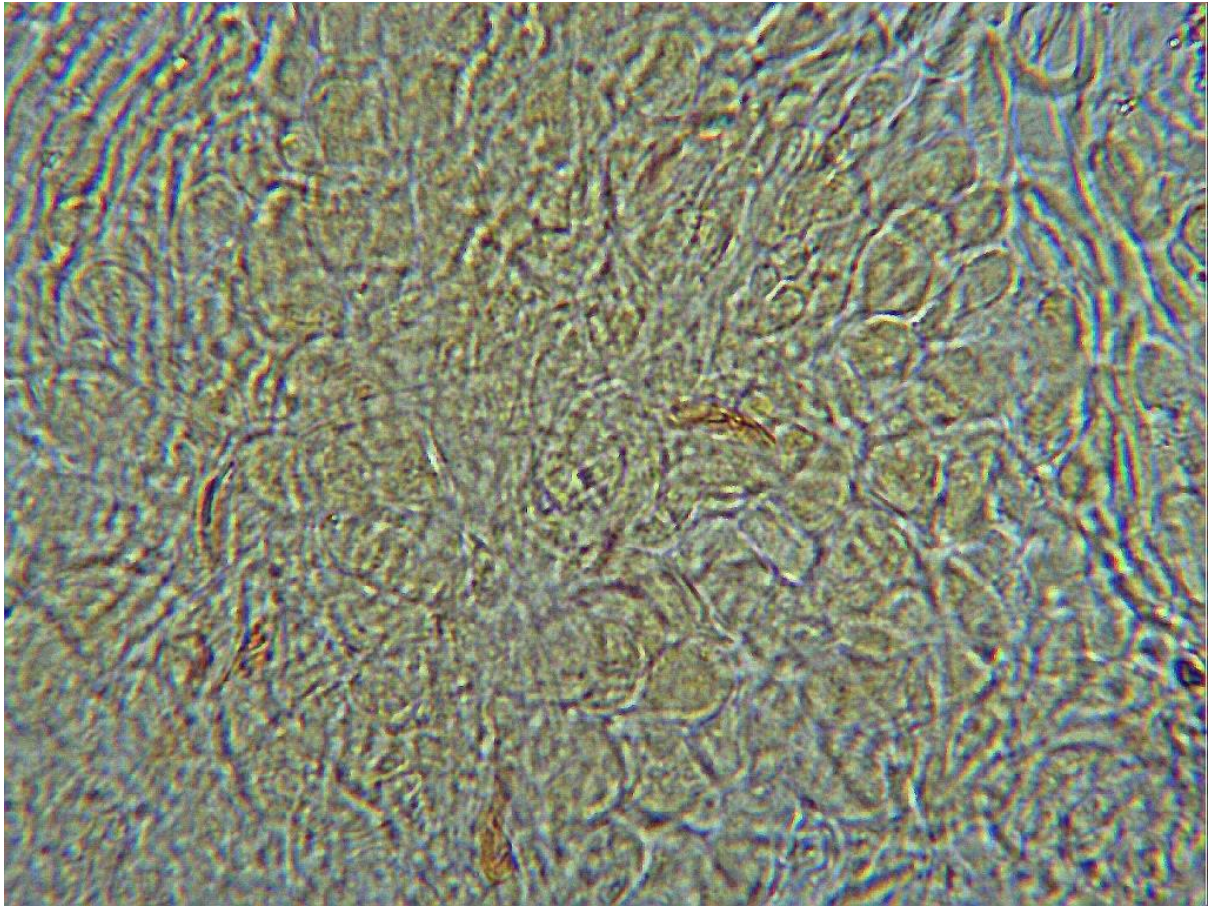
Microphotos follow:





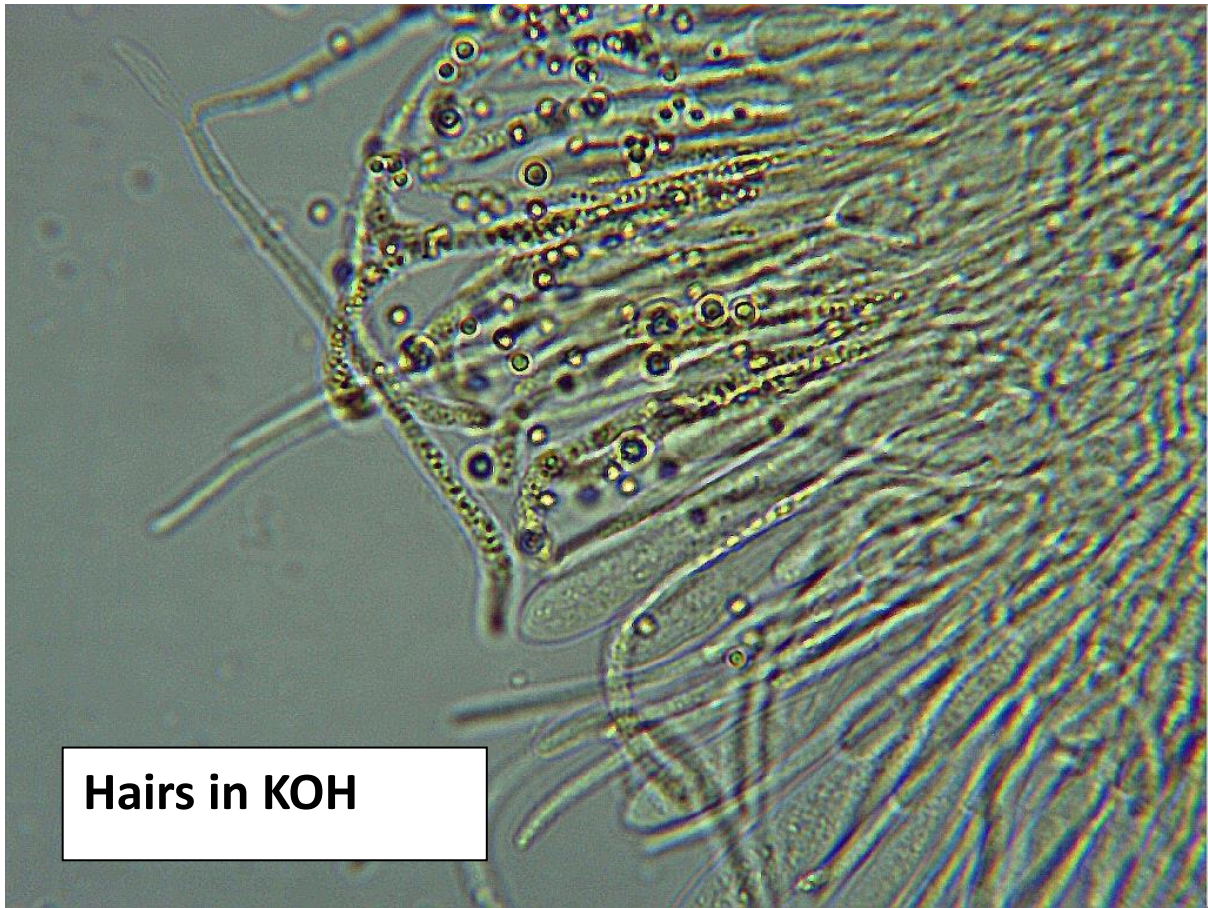




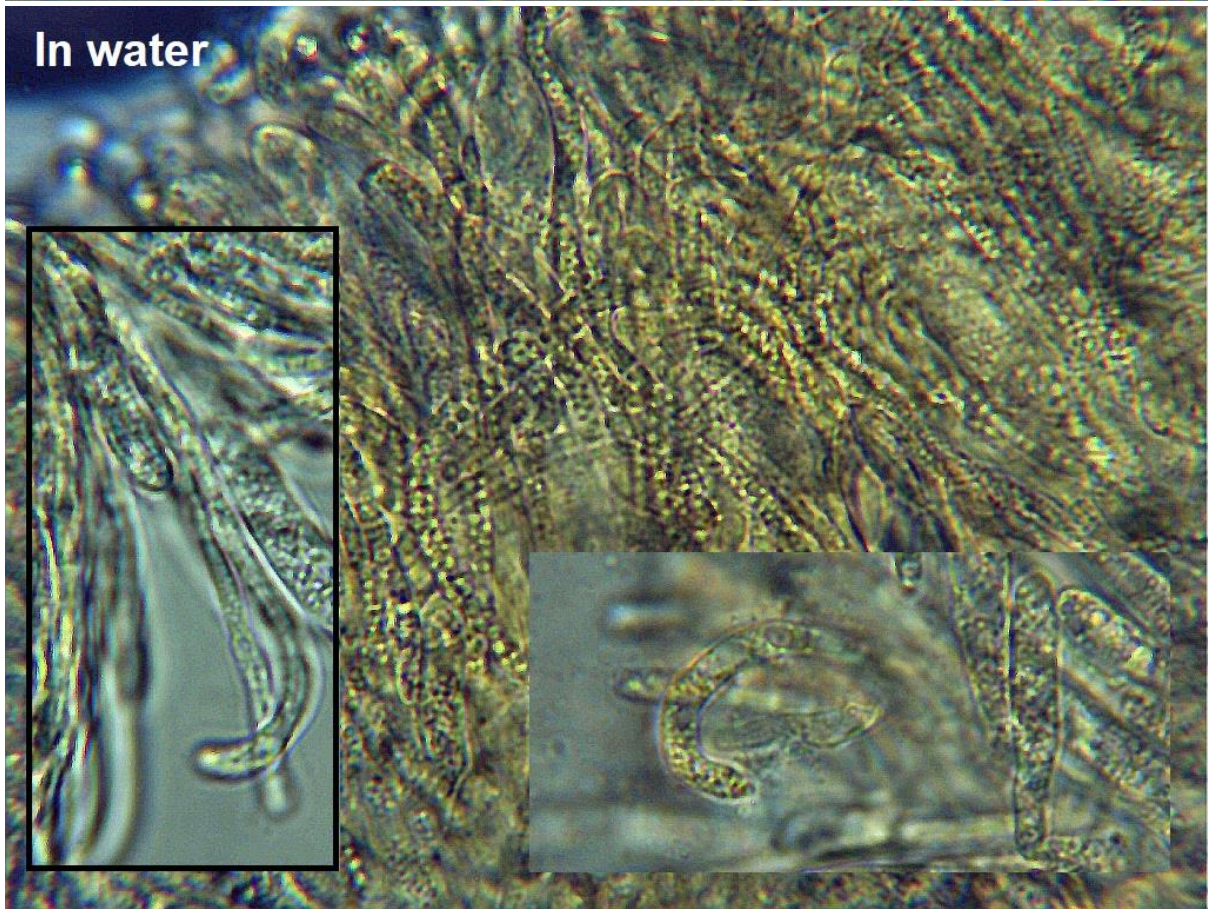


**Hairs in KOH**





Hairs in KOH



In water



