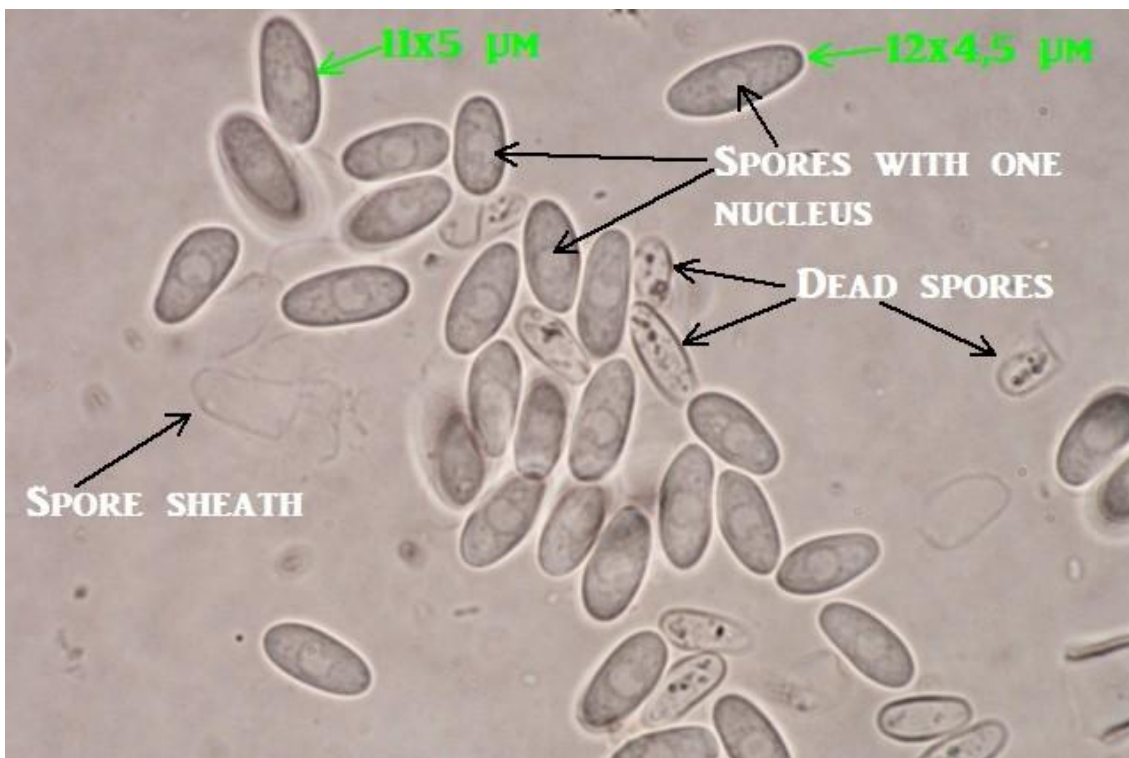
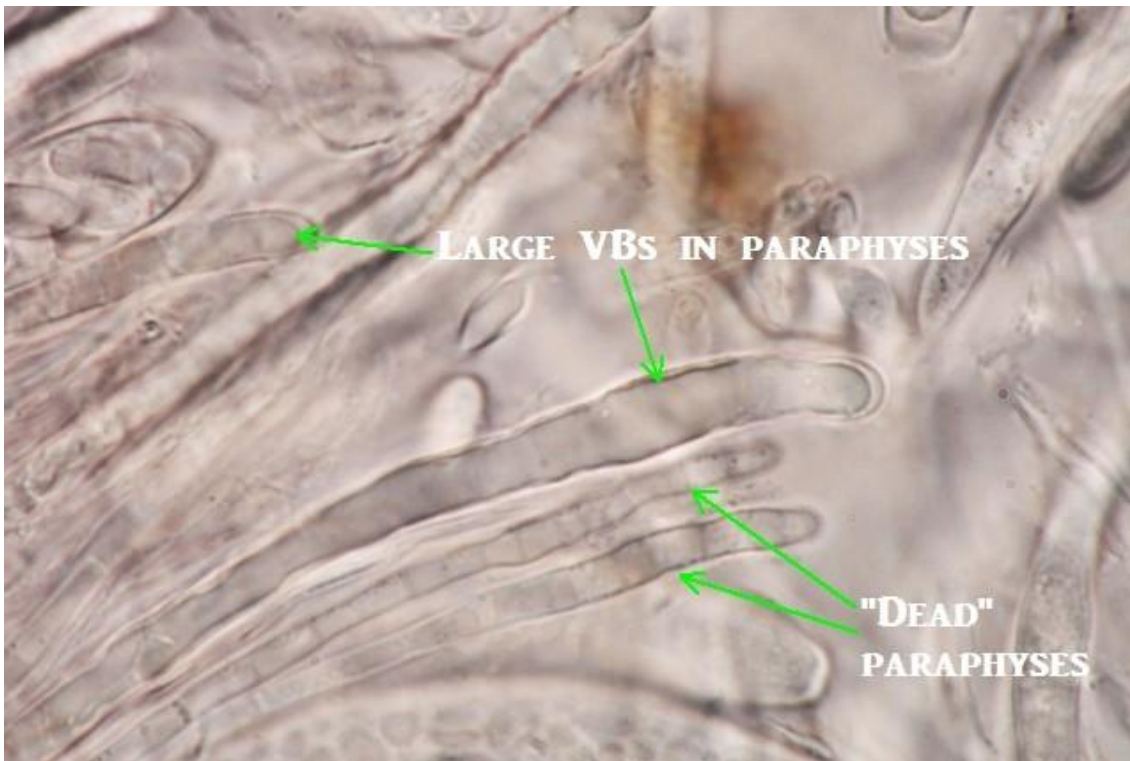
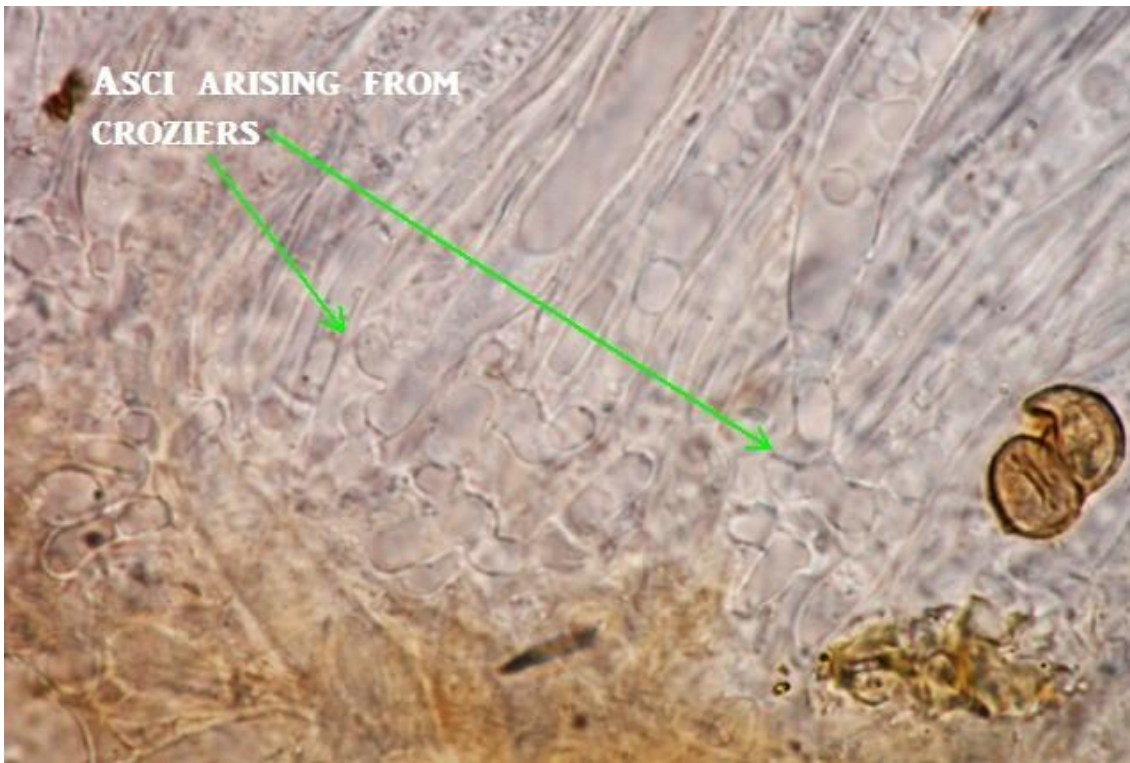
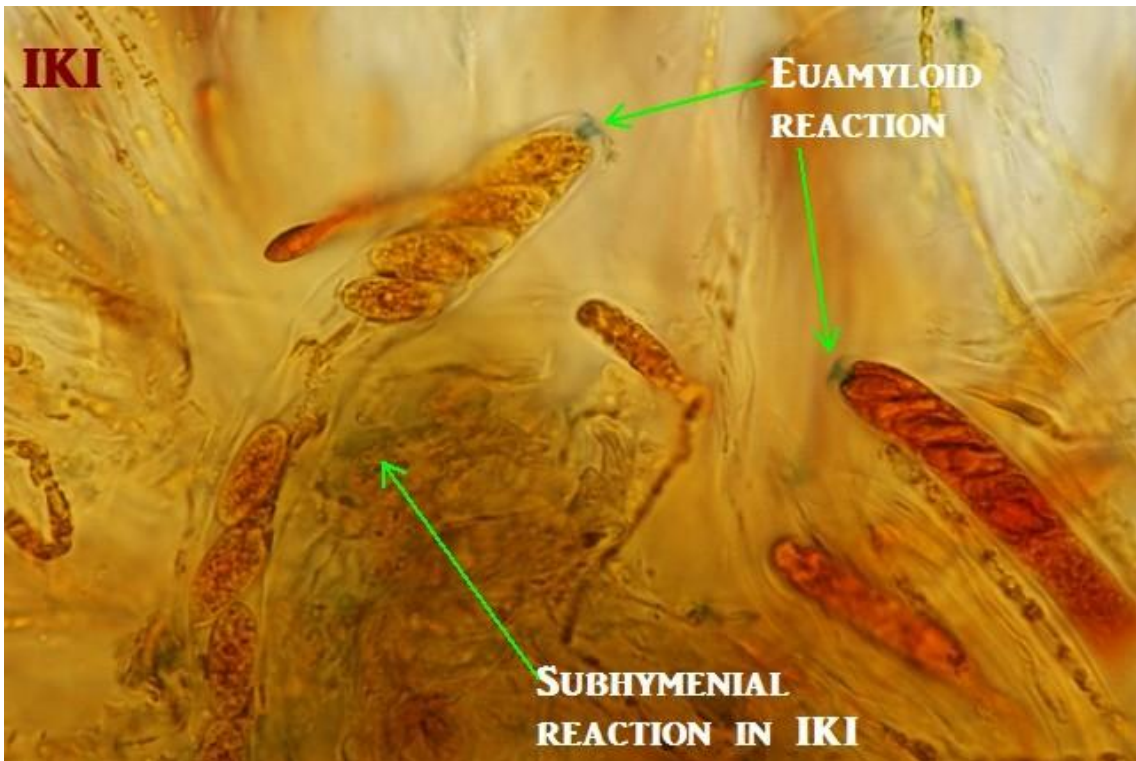
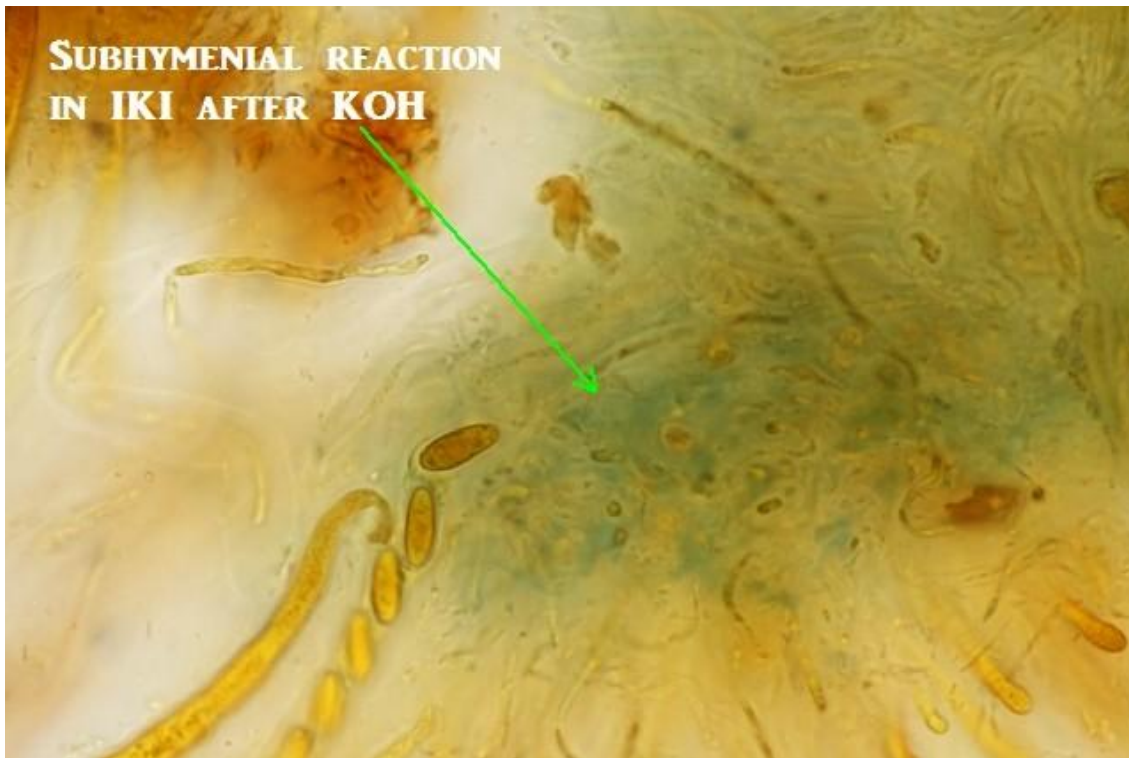


Ciboria americana?









Hi again!

Yesterday (2010-09-15) I found this *Ciboria* on a *Quercus pyrenaica* stromatized fruit. A stromatized area can be found at the base of the apothecia. Because *Ciboria batschiana* has always two nucleus?, it cannot be my species. I see that there is other species on the same host: *Ciboria americana*. So my question is if mine can be *Ciboria americana*.

Spores with one nucleus: 9-12 x 4-5 μm , nearly no oil drops, with spore sheath.

Paraphyses with one large refractive VB in the upper segment, width up to 4-5,5 μm .

Subhymenium slightly brown-pigmented, reacting light blue in IKI and enhanced in IKI after KOH.

Medulla: more or less hyaline textura intricata parallel to hymenium, also a bit reacting light blue in IKI but only noticed after KOH.

Asci: up to 95 x 9,5 μm , arising from croziers, euamyloid, Sclerotinia-type.

Ectal excipulum composed by pigmented (brown-reddish) rounded cells which protrude at margin and in outermost cells. Some bear VBs. No reaction in IKI, even after KOH.

I think there is enough data, but I have more photos if you need.

Thanks in advance,

Raúl.