

Cf. Hymenoscyphus ericae

Photo uploaded at:

https://www.cubbyusercontent.com/pl/%234516/_ffc5dec31914441ea01be041b14cc613

Examined specimens: #4516, #4488

Location: Russia, West Siberia, Khanty-Mansiysk region, in vicinity of Khanty-Mansiysk town, Mukhrino bog.

Collection coordinate: 60.89180N 68.67959E.

Leg. Nina Filippova

Vegetation: ombrotrophic (=raised) bog with pattern of treed areas and graminoid-sphagnum hollows. Collection was made in treed community (Pine-dwarfshrubs-Sphagnum fuscum bog). Tree layer created by *Pinus sylvestris* (stunted bog form). Well developed dwarfshrub layer made by *Ledum palustre*, *Chamaedaphne calyculata*, *Andromeda polifolia* and *Vaccinium uliginosum*. Plants poorly represented, mainly *Rubus chamaemorus*, *Oxycoccus microcarpa* and *Eriophorum vaginatum*. Sphagnum carpet made by *Sphagnum fuscum* on hummocks and *S. angustifolium*, *S. magellanicum* in depressions. This plant community classified under **Ledo-Sphagnetum fuscum** community association (class **Oxycocco-Sphagnetea**) in floristic classification of bogs in the region (Lapshina, 2010).

Substrate: on the surface of peat (locations where Sphagnum was damaged by walking), or among alive carpet of *Sphagnum fuscum* on brown dead parts of shoots and branches, some in vicinity of green algae.

Morphological description:

Apothecia shallow cupulate to plane, with concave or convex hymenial surface, sessile, 500-700 µm in diameter, about 200-300 µm high, white to yellowish, outer surface and hymenium of similar color, edge more or less differentiated, without hairs.

Excipulum from textura porrecta/oblita, hyphae with thickened walls, about 2.3-3.7 µm broad, hairs at the edge not differentiated; medulla from round, ellipsoid cells with thickened walls, from 6 to 11 µm in diameter; asci clavate, arise from simple septa with well developed hook, with euamyloid ring, 73.4 (64.9-85.2) x 8.2 (7.2-9) µm (n=12); paraphyses cylindrical, slightly enlarged at tips, 1.8-3 µm broad in upper part, content not differentiated; spores ellipsoid, without guttules and vacuoles, 7.3 (6.7-9.1) x 3.3 (2.8-3.5) µm (#4516, n=19), 9.3 (8.1-10.9) x 3.7 (3.2-4.2) µm (#4488, n=25).

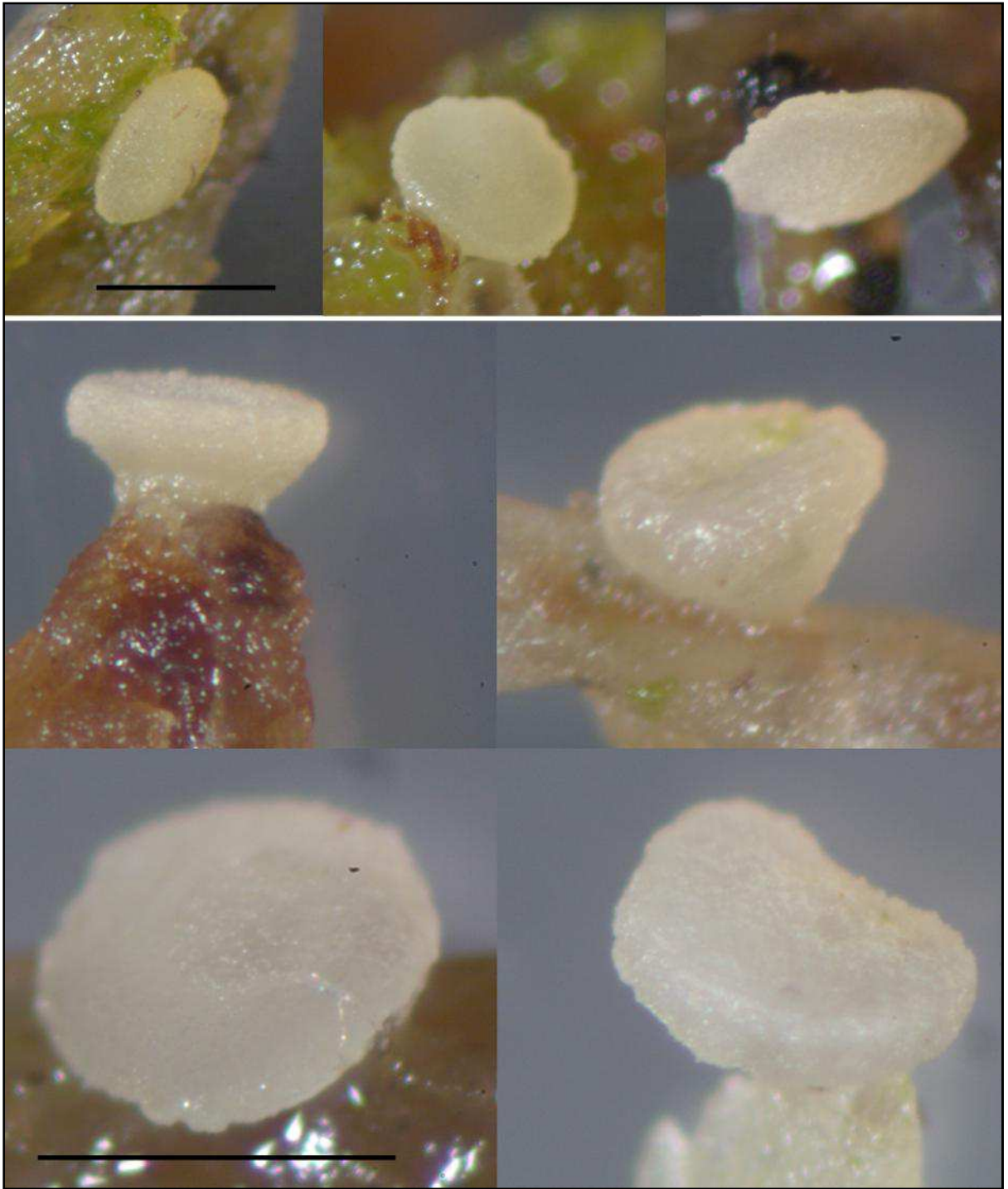


Figure 1. Apothecia under lens, vital stage. Bars equal 500 μm .

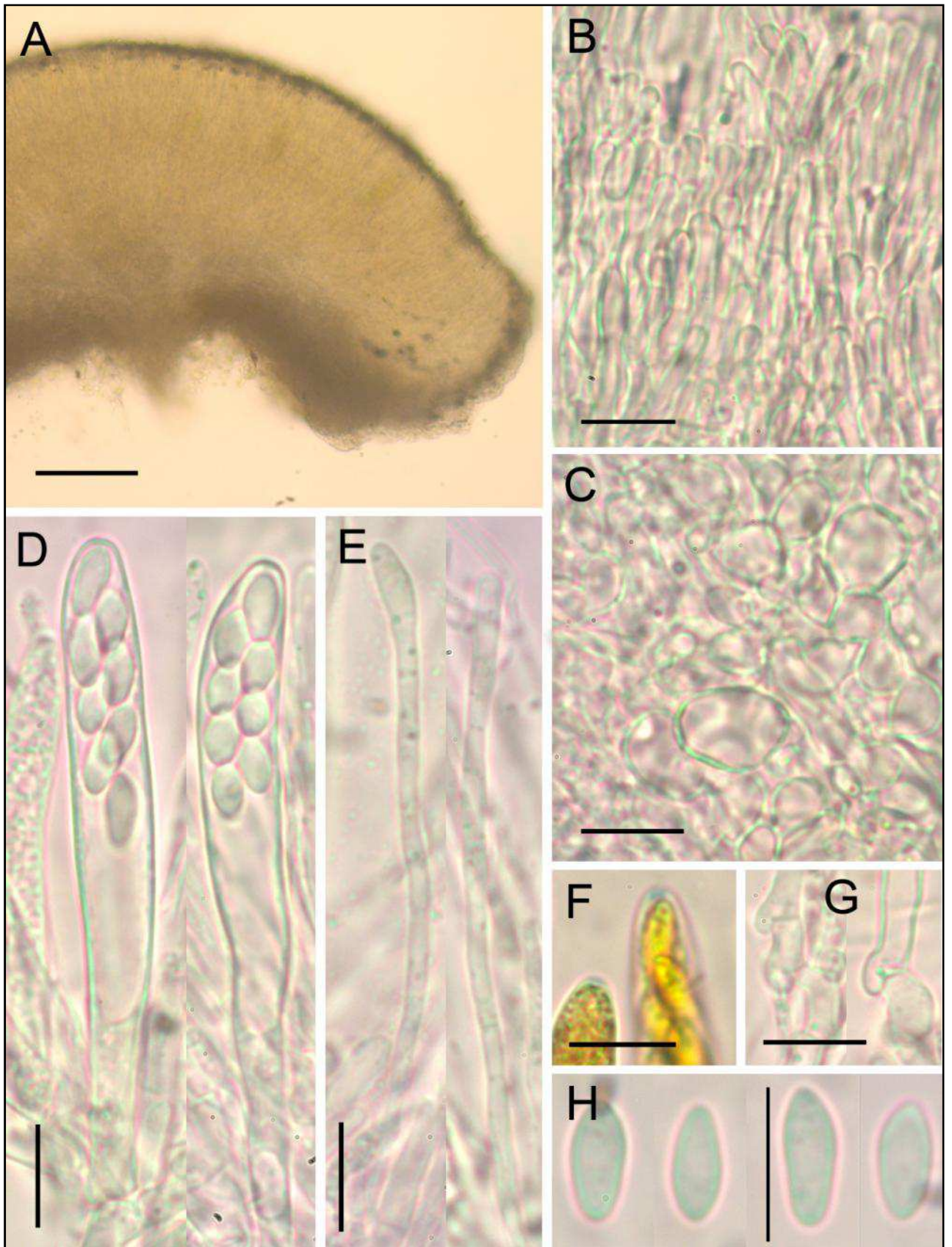


Figure 2. Microstructures in vital state: A. Section through the apothecium, B. Excipulum, C. Medulla, D. Asci, E. Paraphyses, F. Asci ring (water, YKY), G. Ascus hook and simple septa, H. Spores. Bars equal 10 μm .